



Public Health Department
Communicable Disease Section

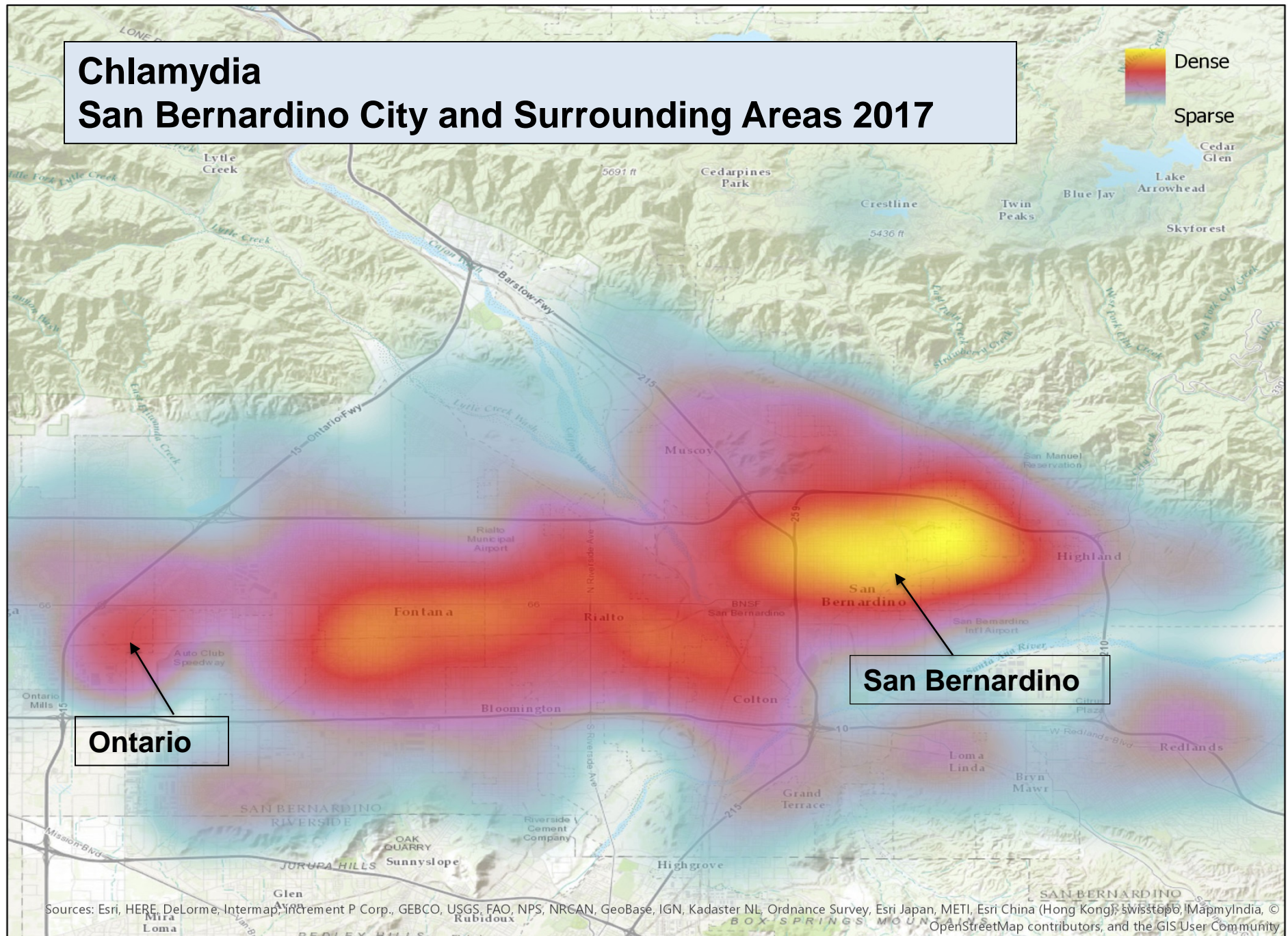
STI/HIV Update 2018

Diana Ibrahim, MPH
Epidemiologist



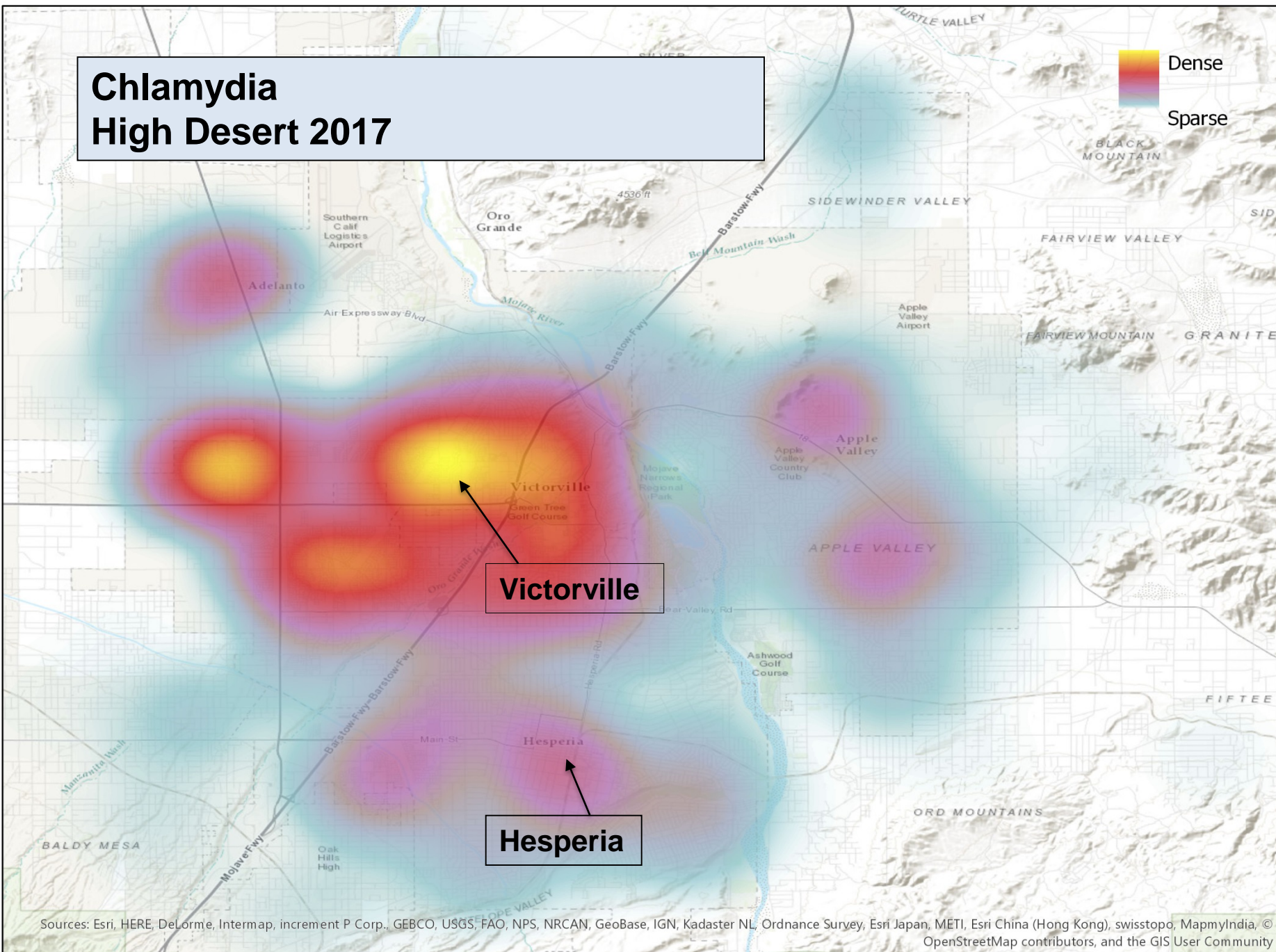
- Reportable conditions by Providers and Labs
 - Chlamydia, Gonorrhea, Syphilis
 - Not reported: Herpes, HPV, NGU, Scabies, Lice
- SB County received 20,500 STD reports in 2017
- Communicable Disease Investigators follow
 - Untreated cases and partners
 - Priority is very young, pregnant, juvie, HIV co-infected

Chlamydia San Bernardino City and Surrounding Areas 2017



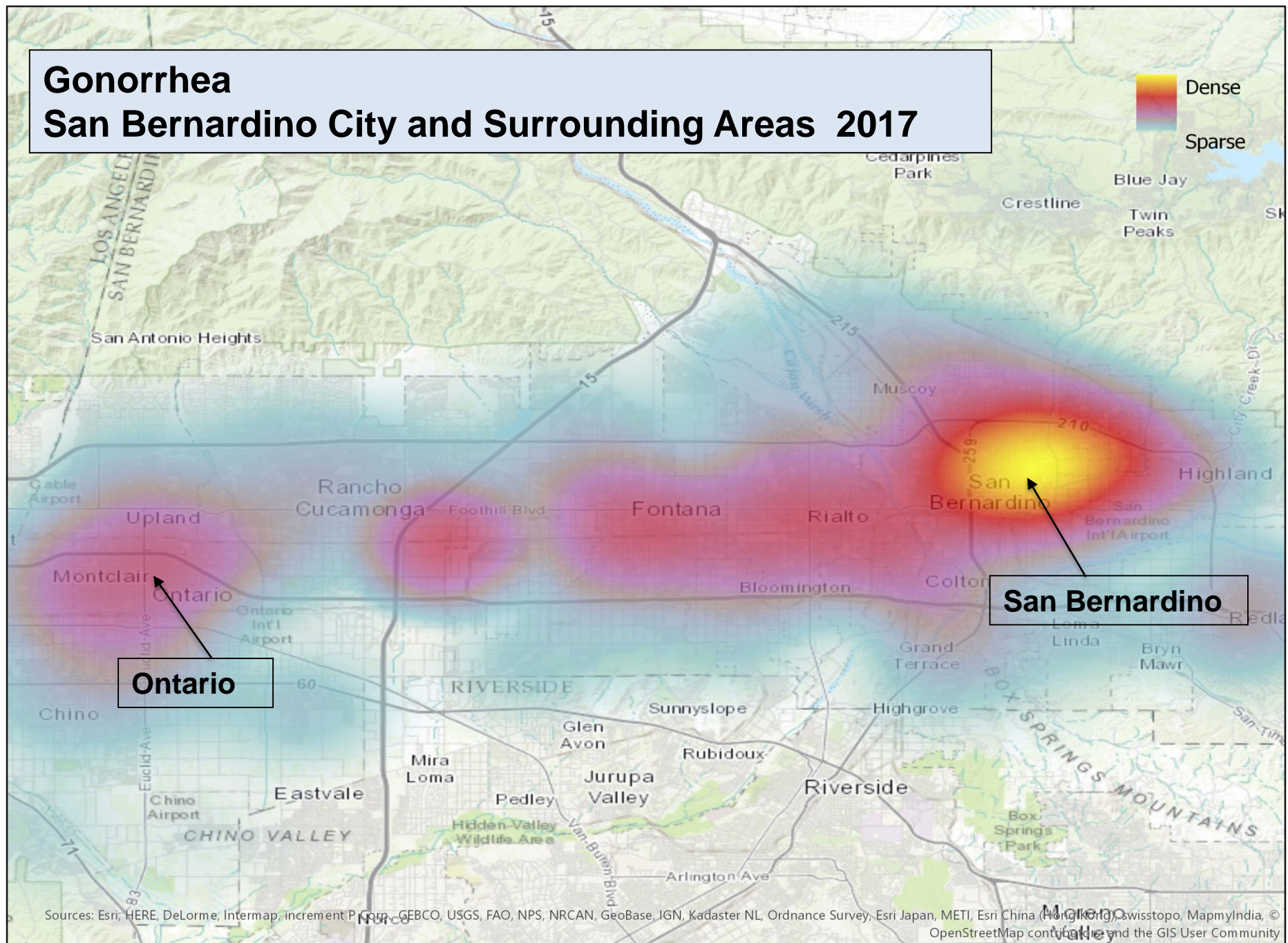
Sources: Esri, HERE, DeLorme, Intermap, Avyment P Corp., GEBCO, USGS, FAO, NPS, NRCAN, GeoBase, IGN, Kadaster NL, Ordnance Survey, Esri Japan (Hong Kong), Swisstopo, MapmyIndia, © OpenStreetMap contributors, and the GIS User Community

Chlamydia High Desert 2017



Sources: Esri, HERE, DeLorme, Intermap, increment P Corp., GEBCO, USGS, FAO, NPS, NRCAN, GeoBase, IGN, Kadaster NL, Ordnance Survey, Esri Japan, METI, Esri China (Hong Kong), swisstopo, MapmyIndia, © OpenStreetMap contributors, and the GIS User Community

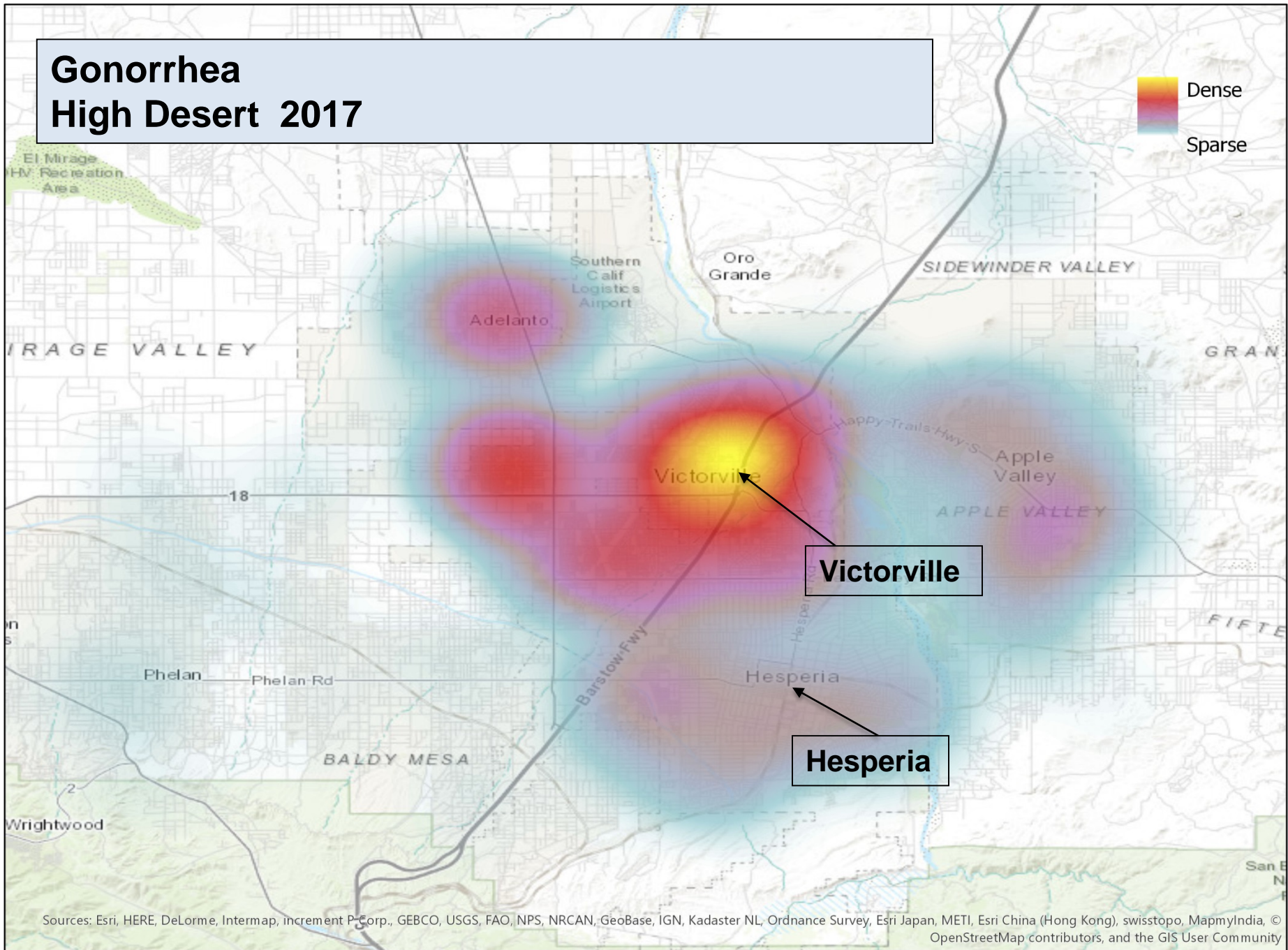
Gonorrhea San Bernardino City and Surrounding Areas 2017



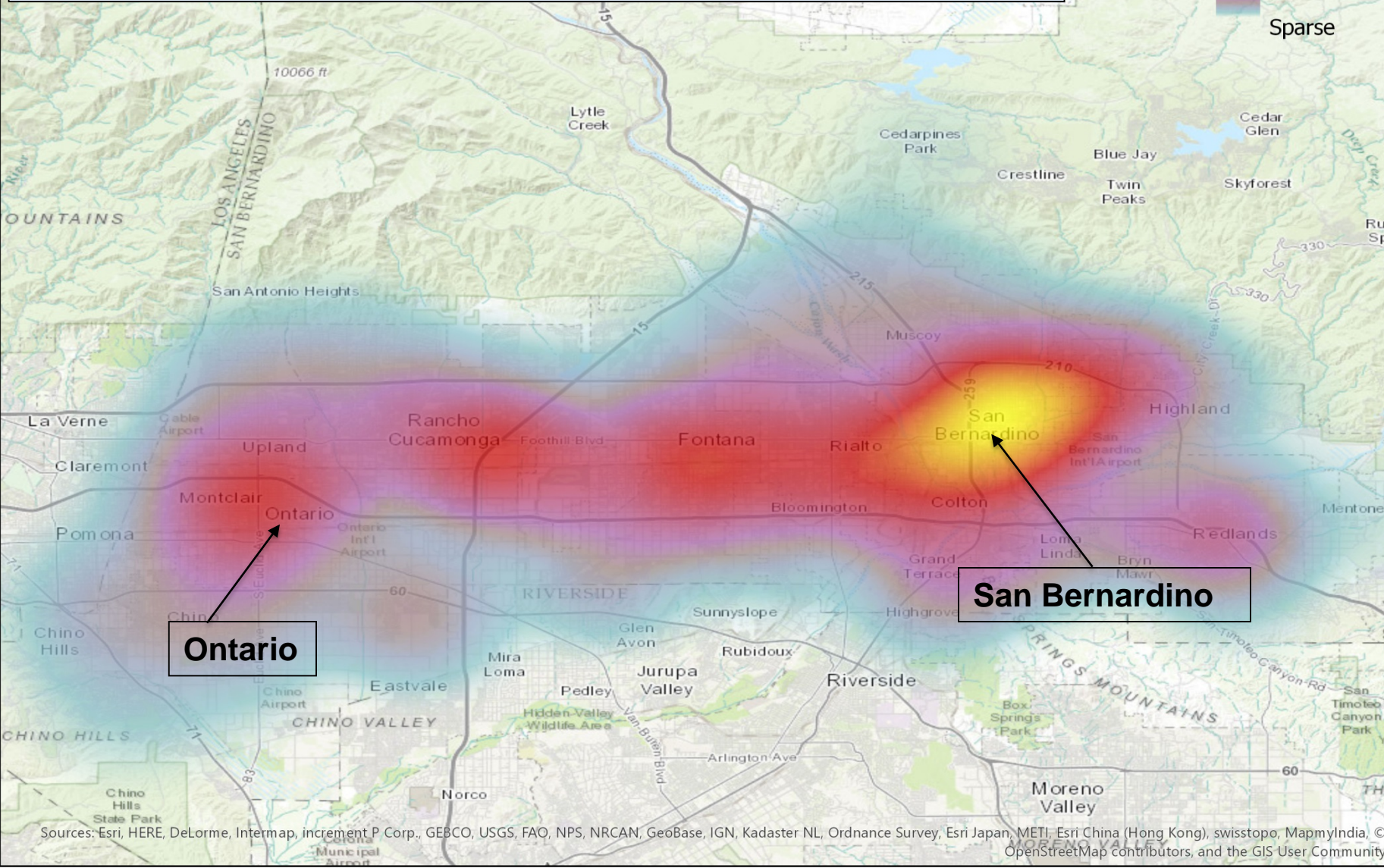
Ontario

San Bernardino

Gonorrhoea High Desert 2017

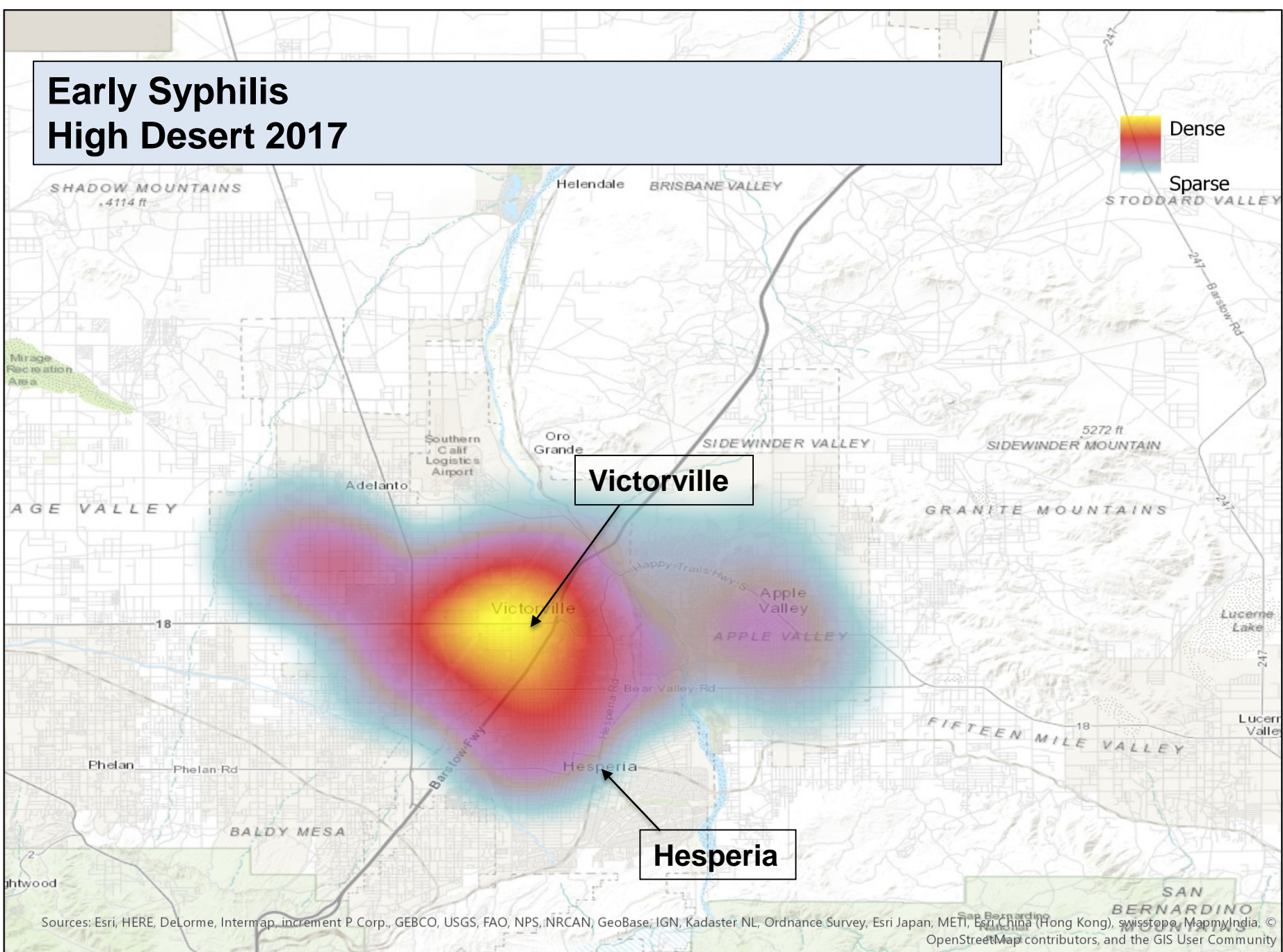


Early Syphilis San Bernardino and Surrounding Areas 2017



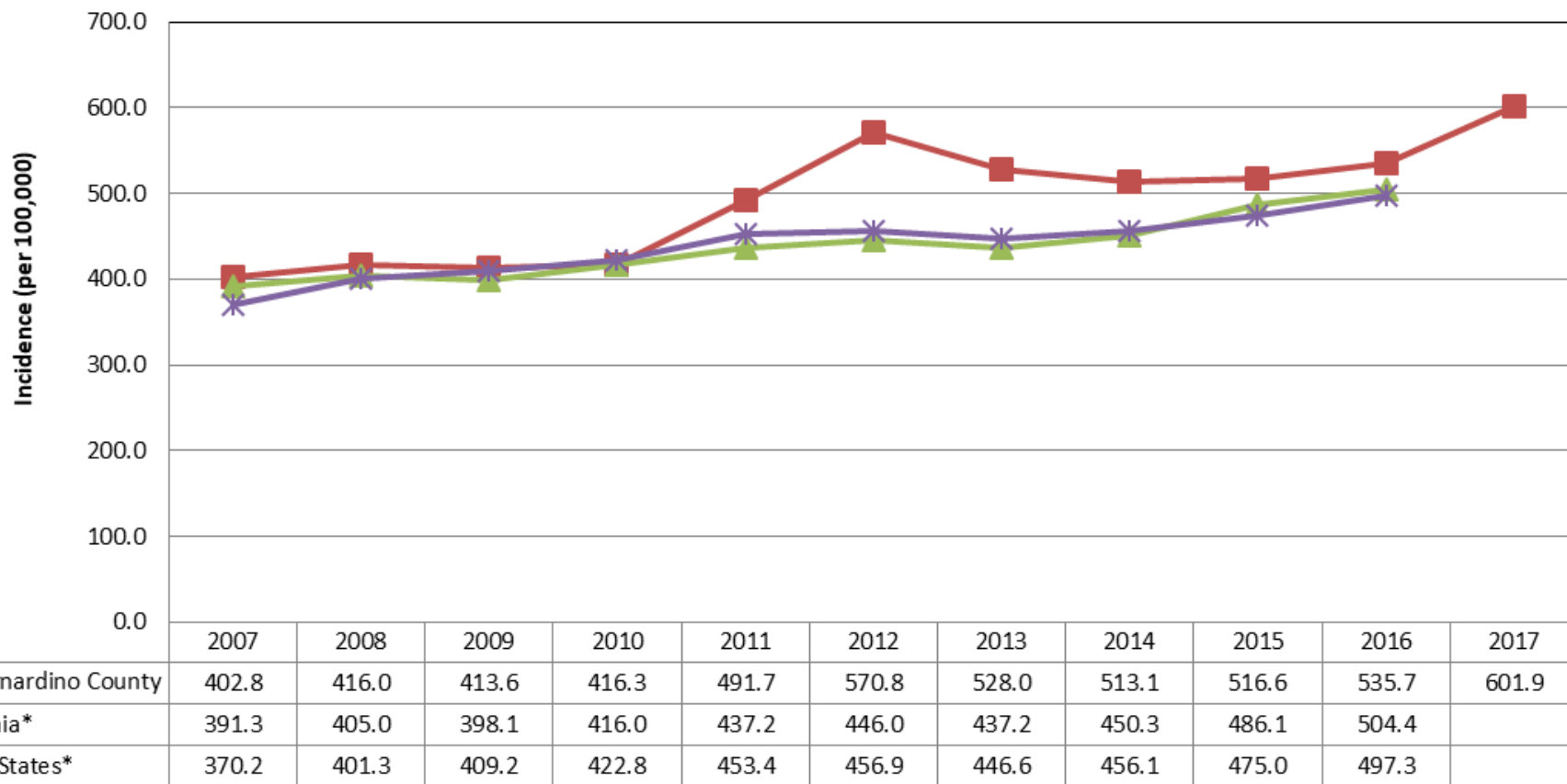
Sources: Esri, HERE, DeLorme, Intermap, increment P Corp., GEBCO, USGS, FAO, NPS, NRCAN, GeoBase, IGN, Kadaster NL, Ordnance Survey, Esri Japan (Hong Kong), swisstopo, MapmyIndia, © OpenStreetMap contributors, and the GIS User Community

Early Syphilis High Desert 2017



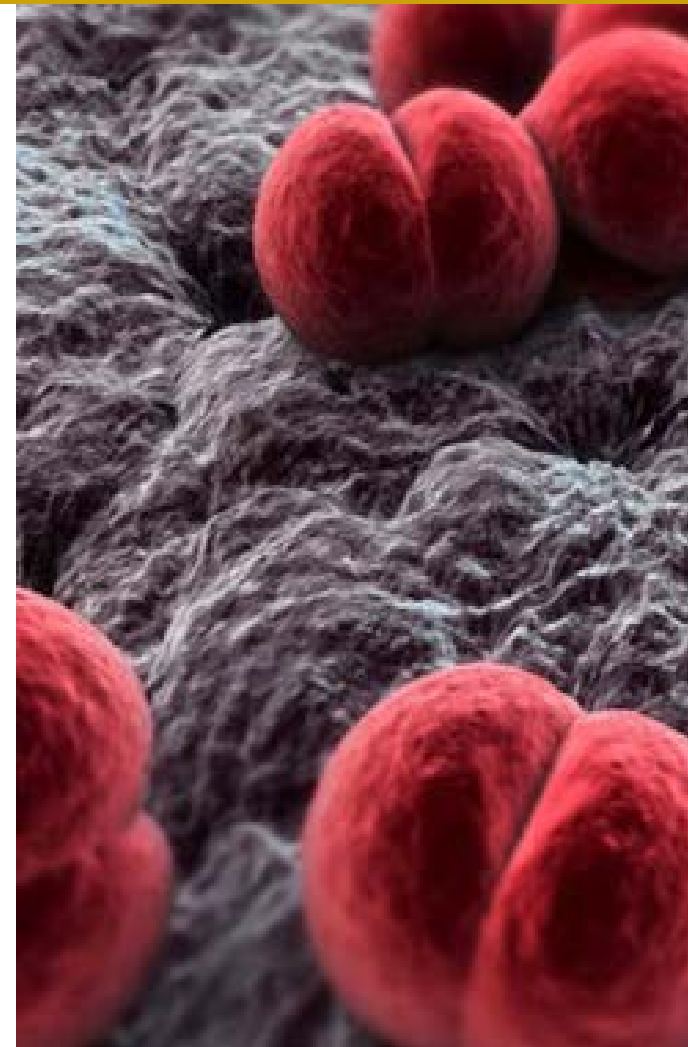
Sources: Esri, HERE, DeLorme, Intermap, increment P Corp., GEBCO, USGS, FAO, NPS, NRCAN, GeoBase, IGN, Kadaster NL, Ordnance Survey, Esri Japan, METI, Esri China (Hong Kong), Swisstopo, MapmyIndia, © OpenStreetMap contributors, and the GIS User Community

Incidence Rates for Chlamydia in San Bernardino County, California, and the United States, 2007-2017



*CA and US data for 2017 were not available at the time this report was published.

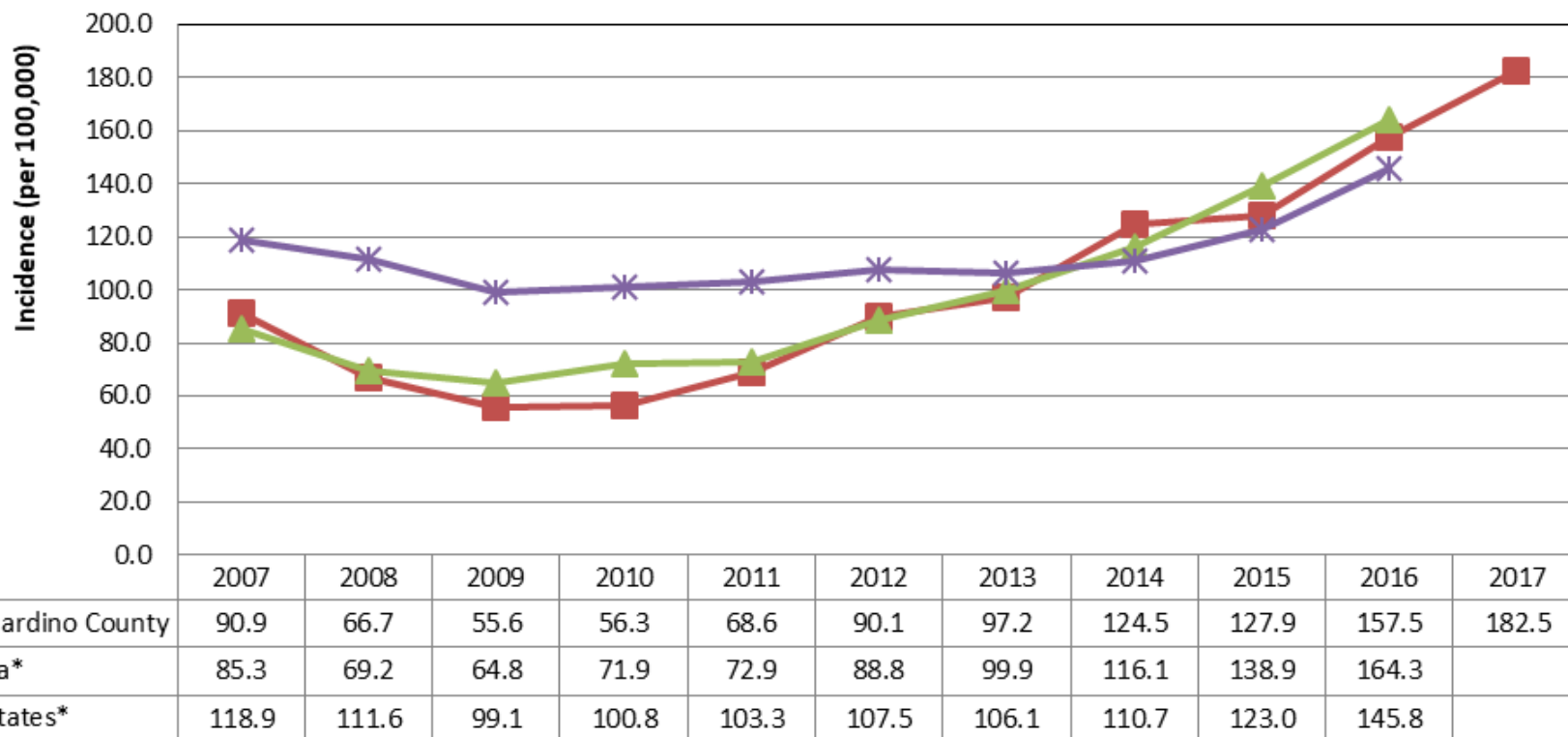
- 2017- roughly 13,200 reports received
- 14% of women will be re-infected within months
- Females 15-24 yrs account for 45% of all cases
- 70% females/25% males may be asymptomatic
- Complications for untreated females:
 - PID, ectopic pregnancy, infertility
 - Preterm delivery, pneumonia in infant



- Younger women have a greater number of columnar cells on the cervix which increases susceptibility to STDs
- Higher prevalence STDs younger sex partners
- Short duration relationships common
- Lack of assertiveness and communication skills
- Power dynamics in dating older people
- Lack of access to health information and services



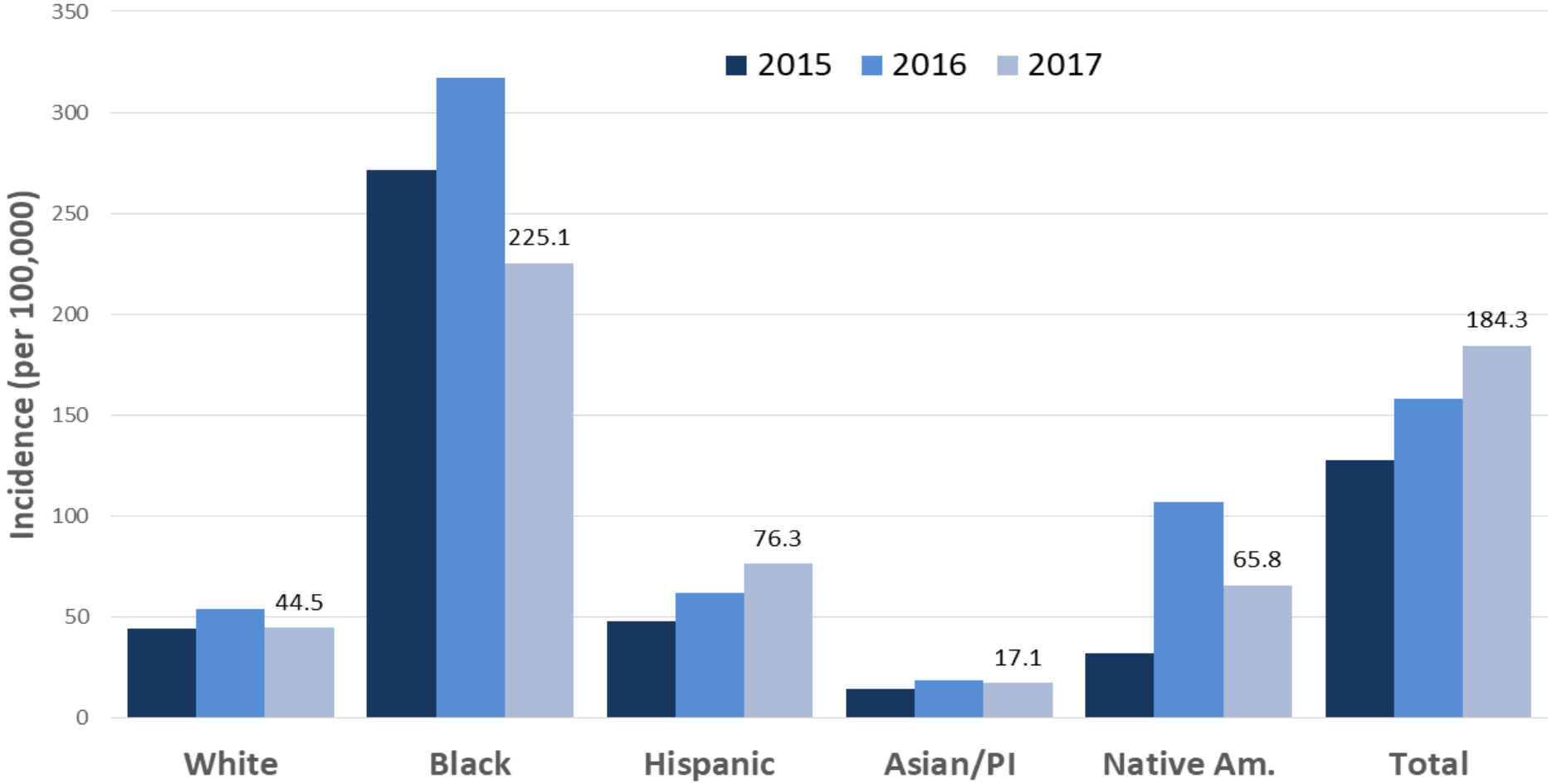
Incidence Rates for Gonorrhea in San Bernardino County, California, and the United States, 2007-2017



*CA and US data for 2017 were not available at the time this report was published.

Incidence of Gonorrhea by Race/Ethnicity

Incidence of Gonorrhea by Race/Ethnicity, San Bernardino County, 2015-2017



- MSM (Gay males) account for 39% of all cases in CA
 - % is increasing
 - 27% of MSM GC cases are also HIV positive
 - Urine only testing misses extra genital infections
- 36% of all cases are treated using nonrecommended regimen or not treated
- 21% of male heterosexual cases were incarcerated previous yr
 - Only 8% of female cases incarcerated
- 7% of cases used methamphetamine in previous yr
- CDC has labeled resistance in Gonorrhea an urgent threat
 - 30% of isolates have some resistance to an antibiotic
 - Two antibiotics are required to treat now—last line of defense
- 12% of women will be re-infected within a few months

Jail Testing Project

- Women under 35 years of age offered STD testing by vaginal swab
 - 9-10% Chlamydia positive
 - 6-7% Gonorrhea positive

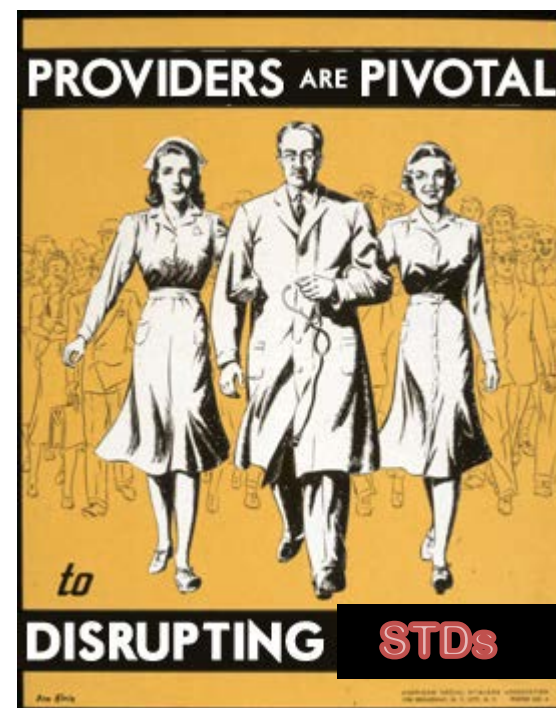
STD Testing Van

- Van parks in designated *Hot Spots*
- Chlamydia, Gonorrhea rapid tests
- Testing, results and treatment in same visit



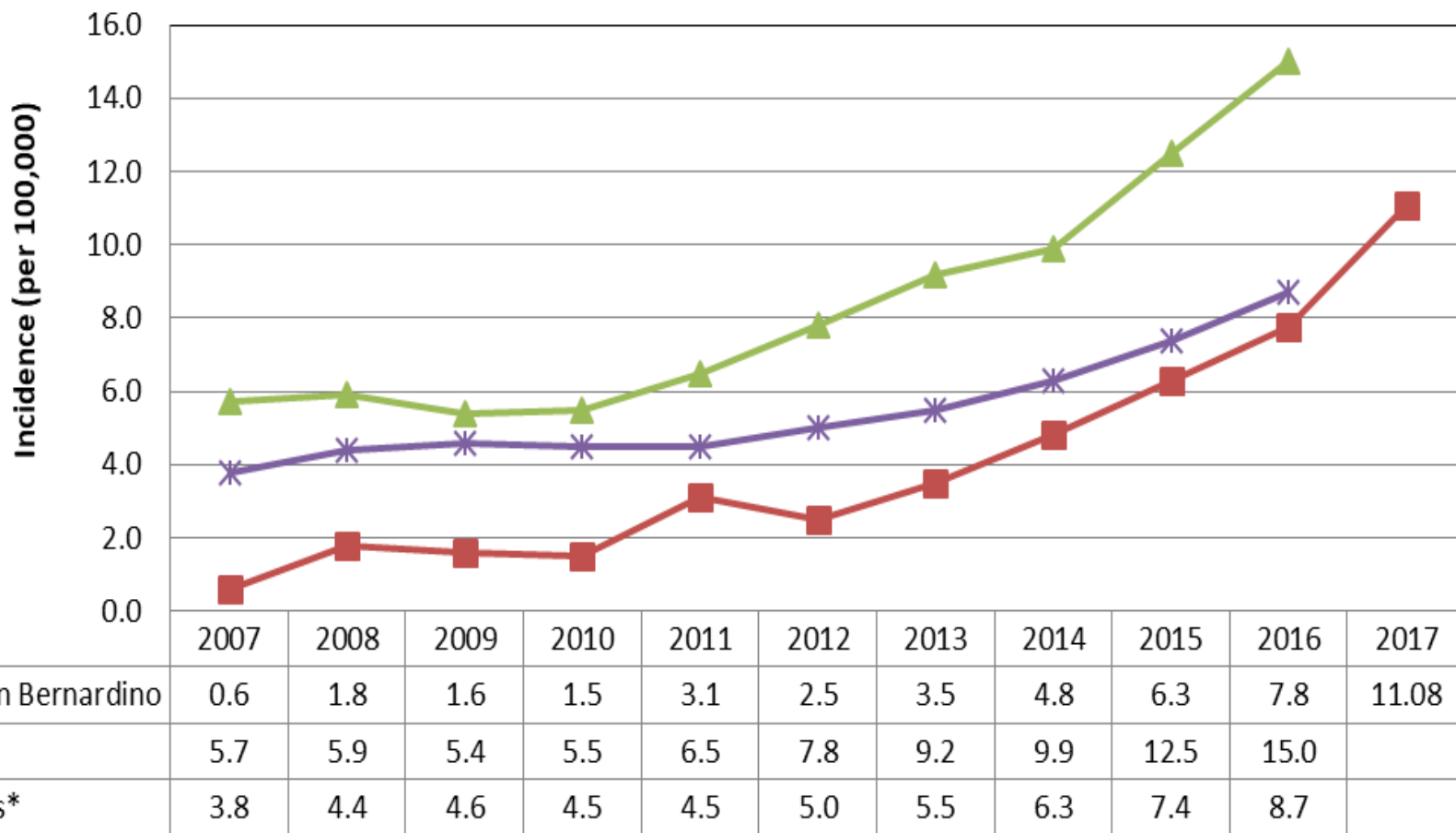
CDS encourages providers to:

- Educate patients
- Request thorough sexual history
- Testing/referral of partners
- Provide treatment to partners- (patient delivered therapy)
- Report completely AND timely to Public Health
- Link STD investigations with HIV testing



Incidence Rates for Syphilis

Incidence Rates for Syphilis (Primary & Secondary) in San Bernardino County, California, and the United States, 2007-2017

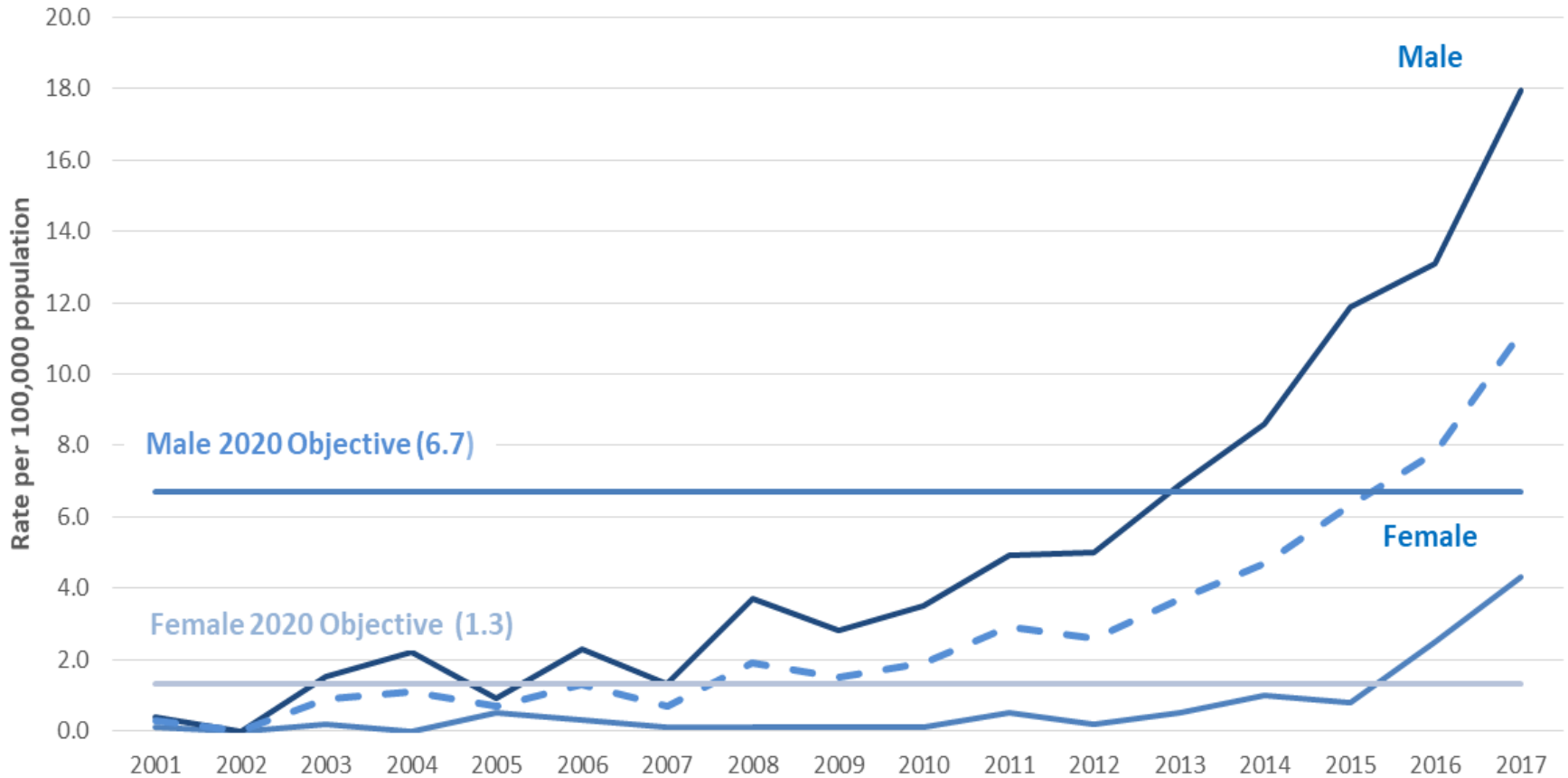


*CA and US data for 2017 were not available at the time this report was published.

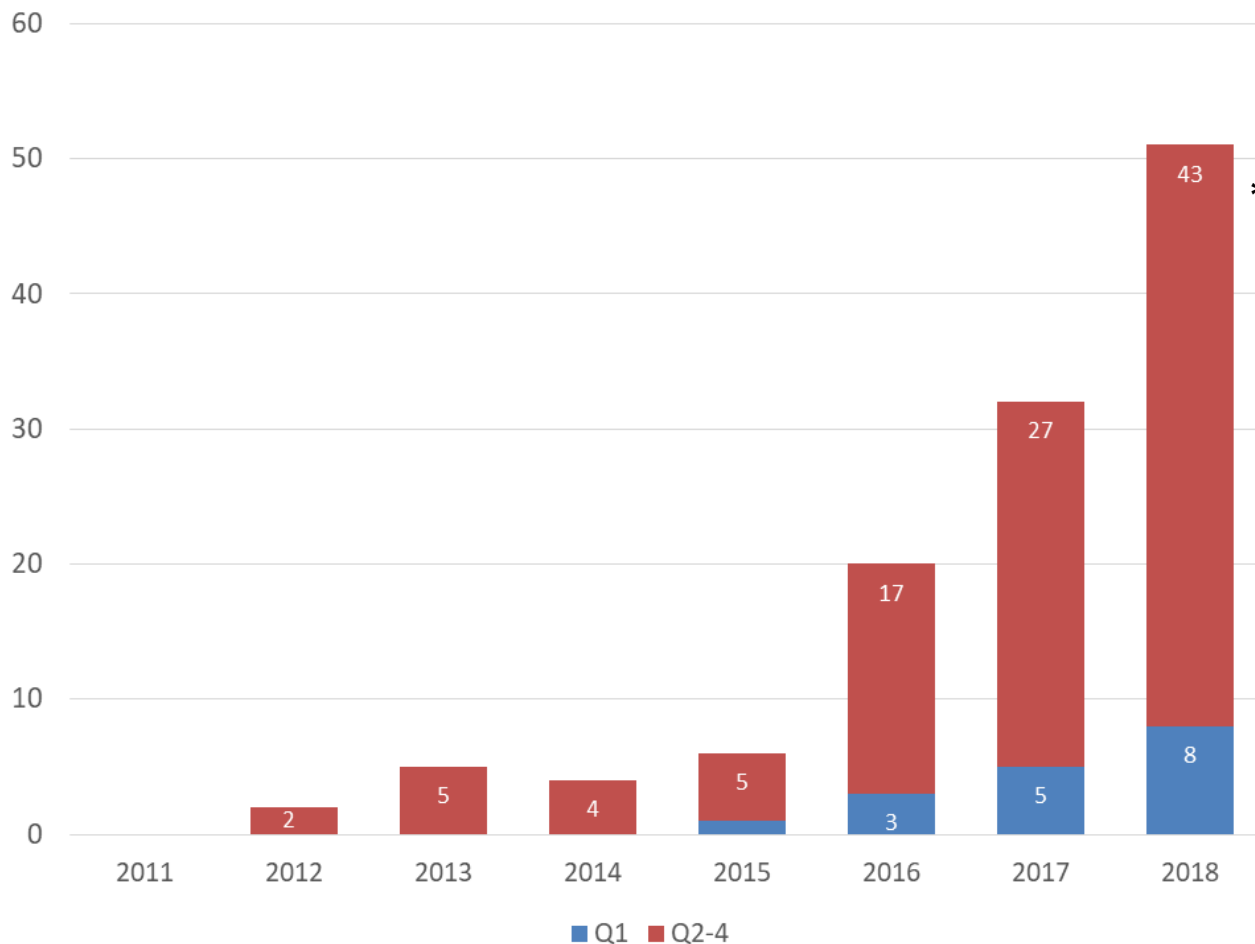


Primary & Secondary Syphilis Rates by Gender

Primary & Secondary Syphilis, Incidence Rates by Gender, San Bernardino County, 2001 - 2017



Congenital Syphilis Cases 2011-2017



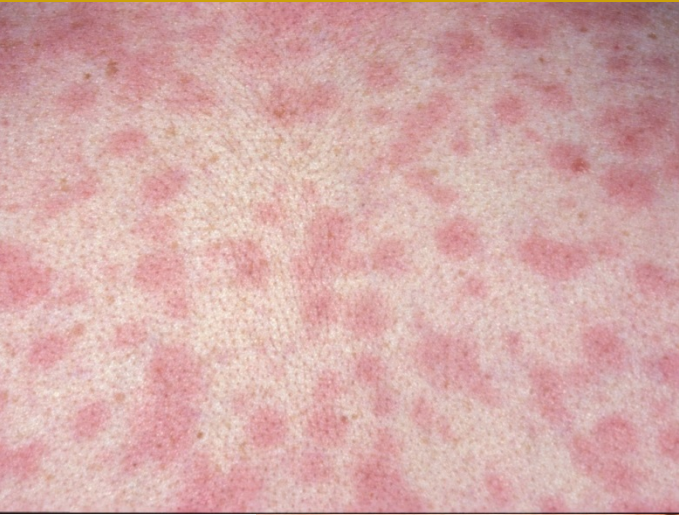
* Projection



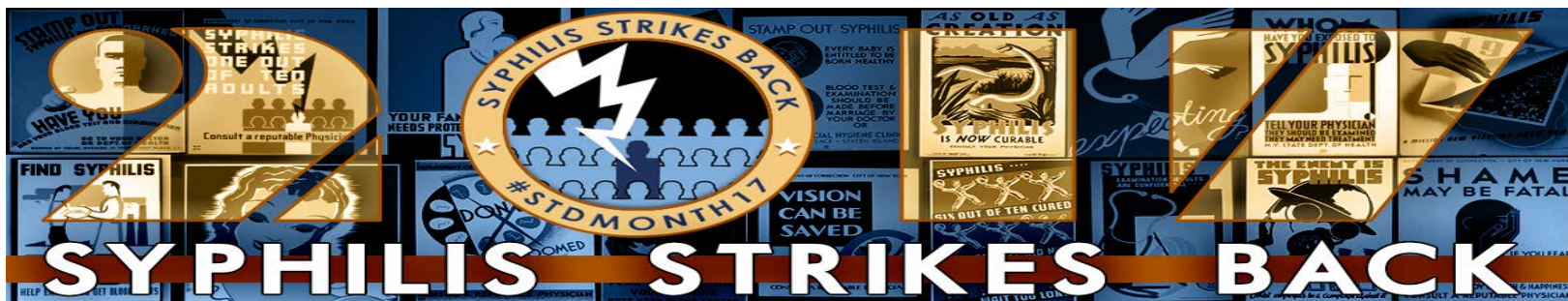
Primary Syphilis



Secondary Syphilis



- MSM (Gay, Bisexual males) account for 79% of male cases
- 49% are HIV positive also (11% of hetero)
- Female cases nearly doubled since 2015
- Infant cases up from 20 (2015) to 32 (2017)
- Congenital cases associated with methamphetamine use, incarceration, lack of prenatal care and poverty
- Many women had no symptoms
- 33-37% of all cases in 20-29 year old group
- 15-17% of all cases use methamphetamine

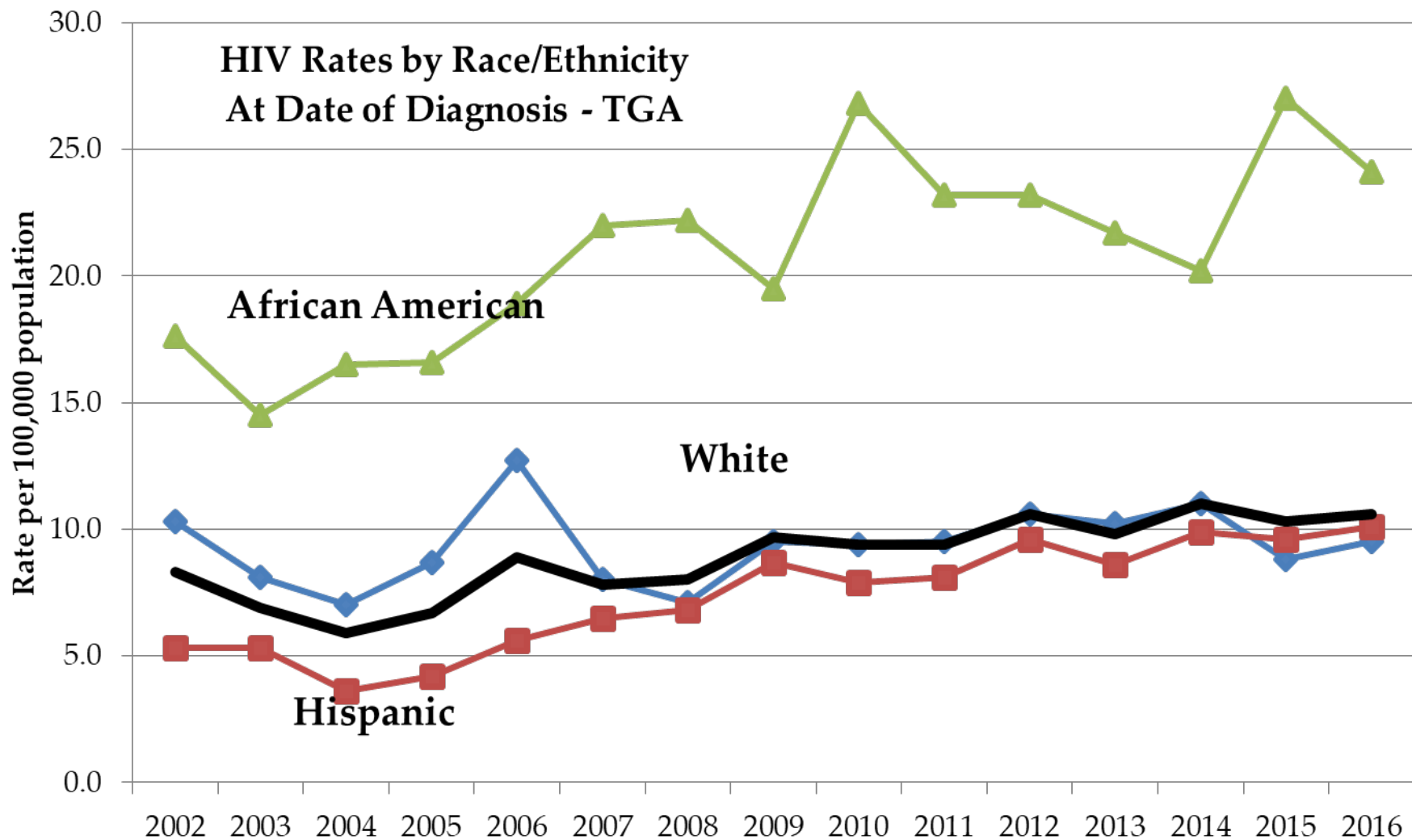


Congenital Syphilis

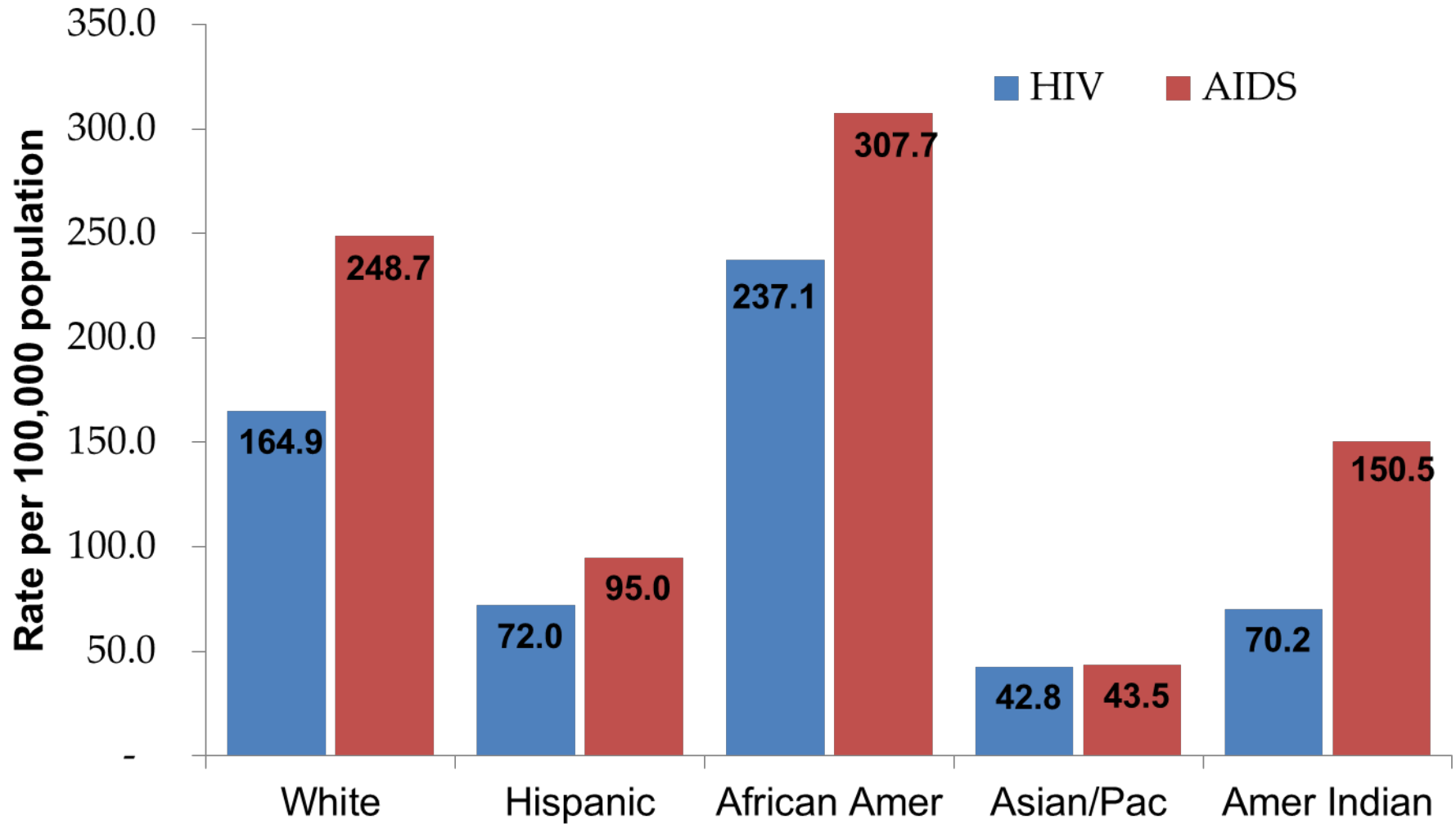


- STD infection increases the chances of transmitting and getting infected with HIV by 3-6 times
- Open sores and cell layer breakdown provide pathway to bloodstream
- White blood cells fighting an STD provide receptors for HIV
- Infections lower natural defenses in vagina (pH and good bacteria)
- GC may increase the amount of HIV in semen.

HIV Incidence Rates (New HIV Cases)—Service Areas Include San Bernardino and Riverside Counties



Prevalence by Race/Ethnicity in 2016



- Prevention with positives
 - Linkage to care, treatment adherence, support services key to maintaining undetectable viral loads
 - 81% of all persons living with HIV and in care have undetectable viral loads- much less infectious
 - New focus on acute HIV infection- very infectious
- Why HIV testing is important
 - Many people with STDs also have HIV
 - 16% of HIV+ are unaware
 - 23% of new HIV cases develop AIDS within 90 days
 - PH can notify partners

Pre Exposure Prophylaxis PrEP

- High risk individuals take HIV meds before infection
- Truvada- 2 HIV meds/1 pill/1 time daily
- Continue to use condoms
- Early side effects mild and disappear
- Clinical studies- reduced risk up to 90%
 - MSM, discordant heterosexual couples
- Requires regular medical monitoring
- Many insurances will pay for

- First meeting: April 2017
- Next meeting: July/August 2018
- Goals: raise awareness, look for interventions, and to decrease STDs
- Providers, schools, youth, community organizations invited



Questions?

Communicable Disease Section
1-800-722-4794

